



Enhancing your home



Welcome



Your home is one of the most significant purchases you'll ever make. Whether you want to create an oasis of calm, a busy family home or a cosy environment for your friends and family to enjoy, at some point you'll want to enhance your home.

Liniar is a market leading window system. Our system is BSI registered and is designed for high energy efficiency. Our Secured by Design accreditation illustrates our commitment to quality and security.

Our philosophy is clear: to design and develop innovative products which will enhance your home.



Contents

About Us	4
Our Green Credentials	5
Enhanced Security	6-7
Window Range	8-9
Door Range	10-11
Bi-Fold Door Range	12-13



In 2008 we set about designing a brand new window system from scratch, which has allowed us to create the only system that is designed around the latest energy regulations. It is one of the most energy efficient, secure, environmentally friendly and attractive range of windows and doors on the market today.

All our products are designed, developed, manufactured and tested in house at our £8 million state of the art production facility in the heart of the Midlands. Our team of industry experts have over 500 years of combined experience in the window industry and together we have achieved numerous BSI accreditations.



BS EN 12608:2003
KM522037



BS EN 7950:1997
KM522039



PAS 23-1:1999
KM522040



PAS 24:2007
KM522040





A greener future

Our homes and buildings are responsible for almost half of the UK's carbon dioxide (CO₂) emissions. Around 25 per cent of the heat escaping from an average home is lost through its windows and doors.*

Being environmentally aware is everyone's responsibility. For the window industry it means manufacturing products which meet consumers' requirements and tougher legislation. The introduction of Window Energy Ratings (WERs) allows homeowners to shrink their carbon footprint and lower their fuel bills by choosing a more energy efficient window system to reduce the amount of heat lost through their windows.

A

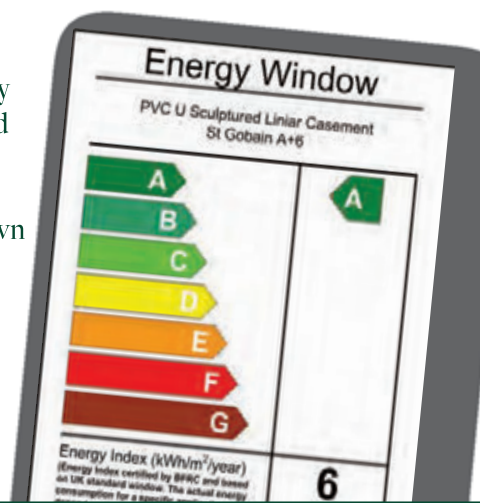
The Liniar window system consistently achieves high energy ratings because it needs virtually no steel reinforcement. It uses multiple chambers to lock in the heat and high performing seals to ensure there are no gaps for heat to escape.

One of the advantages of designing a window system from scratch is that we were able to develop a window that met the challenges of today. Many of the existing window systems are over 20 years old and weren't designed with today's energy conscious consumers in mind.

The Liniar window system is lead free. The dangers of lead are well known and we are extremely proud to be one of the few UK window systems to offer an entirely lead free range of products.



* Source of data: Edgetech 2010.





Safe as houses...



Your home is your castle. Your most treasured possessions are kept within it so you want to ensure it is as secure as it can be. Choosing the right frames and hardware for your windows and doors will increase the security of your home, without compromising on style.

You can feel safe in the knowledge that our window and door system has been engineered to meet the most stringent security standards, and has gained Secured by Design status from the Association of Chief Police Officers.

Our products have been independently tested by the British Standards Institute including enhanced security performance. We are the first PVC-U systems company to be awarded with the prestigious BBA Certificate.



BS EN 12608:2003
KM522037



BS EN 7950:1997
KM522039



PAS 23-1:1999
KM522040



PAS 24:2007
KM522040



Window to the world



Liniar profiles can be combined to create any style of window to meet any functional need. Your windows will be designed, manufactured and installed specifically for your home, in your chosen finish.

Whatever the location and style of your home, there is a colour and finish to match it. Our collection of foils includes rosewood and golden oak to give your windows a more natural timber look.





*When one door closes,
another door opens...*



We understand that your front door can make a huge impact on the overall look of your home. It needs to suit your home, be energy efficient and very secure. All our doors meet these criteria and they are maintenance free. They are available in a variety of colours and styles to suit your home and are guaranteed not to fade or warp in extreme weather conditions.

Your doors will look great for years to come.

The Liniar range offers a wide variety of door styles including front doors, back doors and stable doors. All of which are available in a selection of different finishes to allow you to tailor your door to suit your home.



Bring the outside in...



Liniar's Bi-Fold Plus folding-sliding doors will transform, modernise and add real value to your home. Our bi-folding doors are some of the most attractive, simple to use, energy efficient and secure on the market.

When fully opened, Liniar's Bi-folds are slim and unobtrusive. When closed they offer all the benefits of a modern double glazed patio door. Slim frames give you more glass, less PVC-U and more natural light. The hardware is concealed so only the hinge knuckles show. Low threshold options are ideal for wheelchair users and family homes as they create fewer trip hazards for the elderly and the very young.

Available in a varied range of colours and finishes, your door can easily be tailored to suit your personal taste and home.



Six great reasons to choose us:

1. Quality

All our products undergo rigorous tests to ensure they are of the highest quality, durability and reliability, so you can feel confident that your windows and doors will stay beautiful for longer, with very little maintenance.

2. Energy Efficiency

With ever increasing energy costs, and growing environmental concerns, it's more important than ever to choose a state of the art system capable of achieving the highest standards. Our products have been designed using the very latest software to make the most efficient use of materials.

3. Security

Feel safe in the knowledge our window system has been engineered to meet the most stringent security standards and has gained Secured by Design status from the Association of Chief Police Officers. Our product range has been independently tested by British Standards Institute including enhanced security performance.

4. Lead Free

All our products are manufactured using 100% lead free materials; better for the environment and better for you.

5. Guarantee

Our products are manufactured using tried and tested formulations from approved suppliers and will not warp, split or discolour for a minimum of ten years from the date of installation.

6. Choice of styles

Designed to provide appealing clean lines, choose from a range of white, cream, rosewood or oak finishes to complement your environment.



BS EN 12608:2003
KM522037



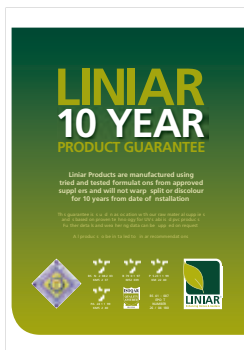
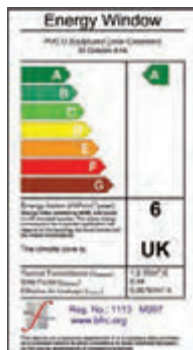
BS EN 7950:1997
KM522039



PAS 23-1:1999
KM522040



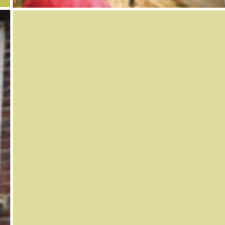
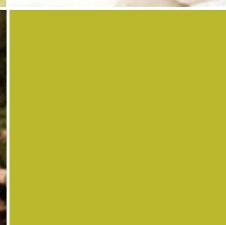
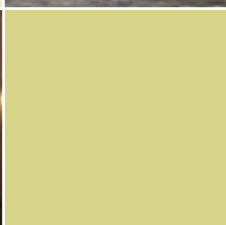
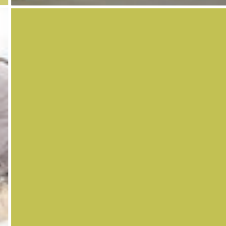
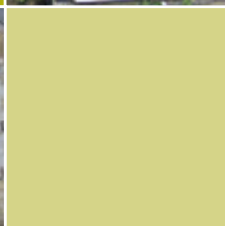
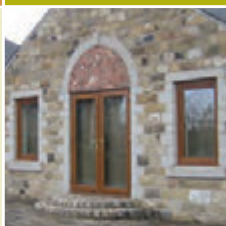
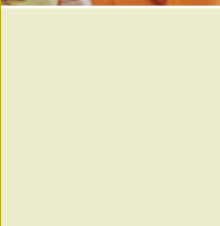
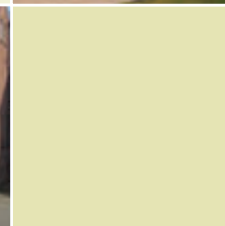
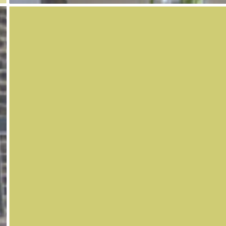
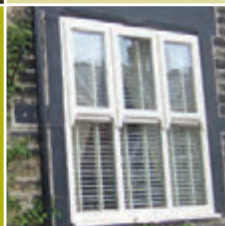
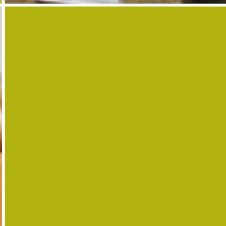
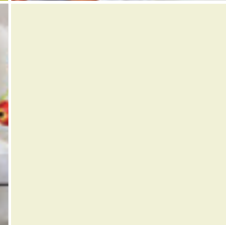
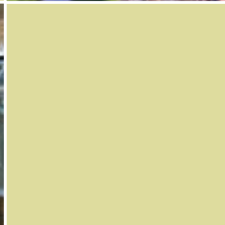
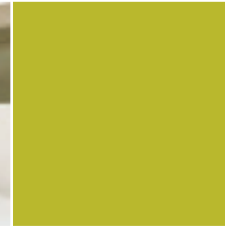
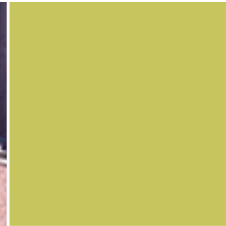
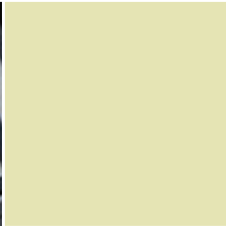
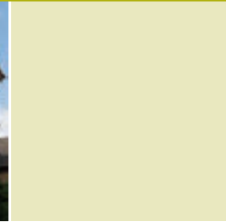
PAS 24:2007
KM522040



Secured by Design

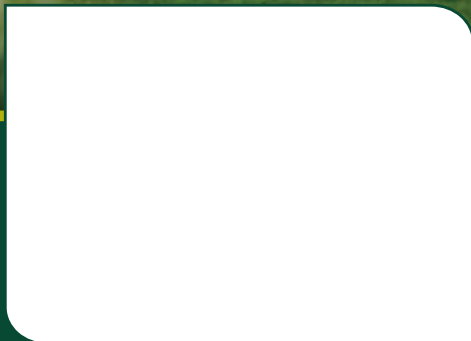


Official Police Security Initiative





Your local stockist:



Manufactured
in the UK

www.liniar.co.uk

